

A world map with a network of green lines and red dots representing travel data for 2017. The map is overlaid with a grid of white dotted lines. The green lines represent travel routes, and the red dots represent travel nodes. The map is centered on the Atlantic Ocean, with North and South America on the left and Europe and Africa on the right. The text "Til hvers ferðumst við?" is overlaid on the map in a white box.

# Til hvers ferðumst við?

Ferðamálaþing 2017

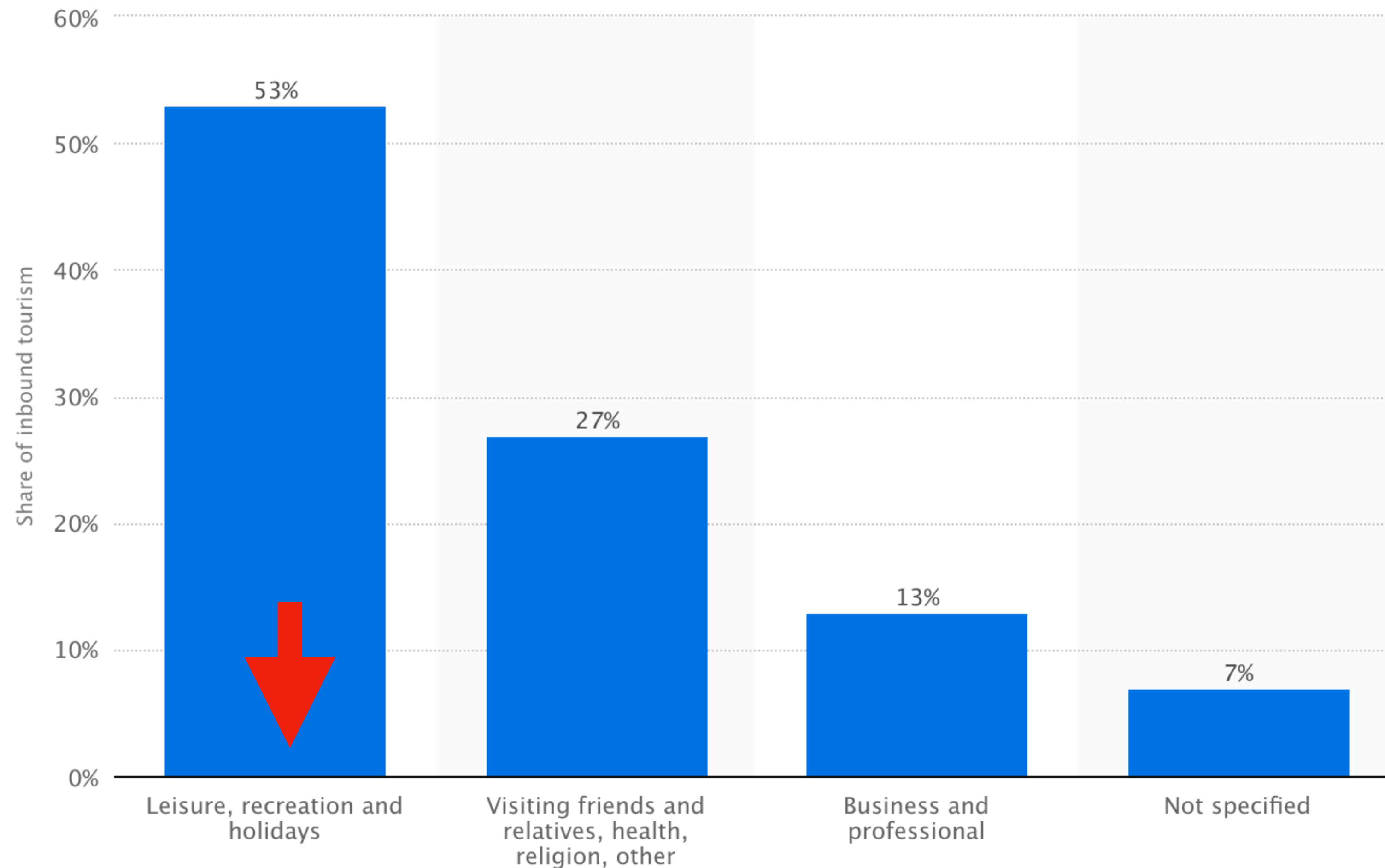
Bergur Ebbi



**Bergur Ebbi**

**MDes, strategic foresight and innovation**

**Cand. jur.**



© Statista 2017

**Leisure, recreation and holidays**

```
graph TD; A[Leisure, recreation and holidays] --> B[Munaður]; A --> C[?]; A --> D[Frí];
```

**Munaður**

**?**

**Frí**





Run for fun?

What the hell kind of fun is that?



**bæting, viðhald, endursköpun**

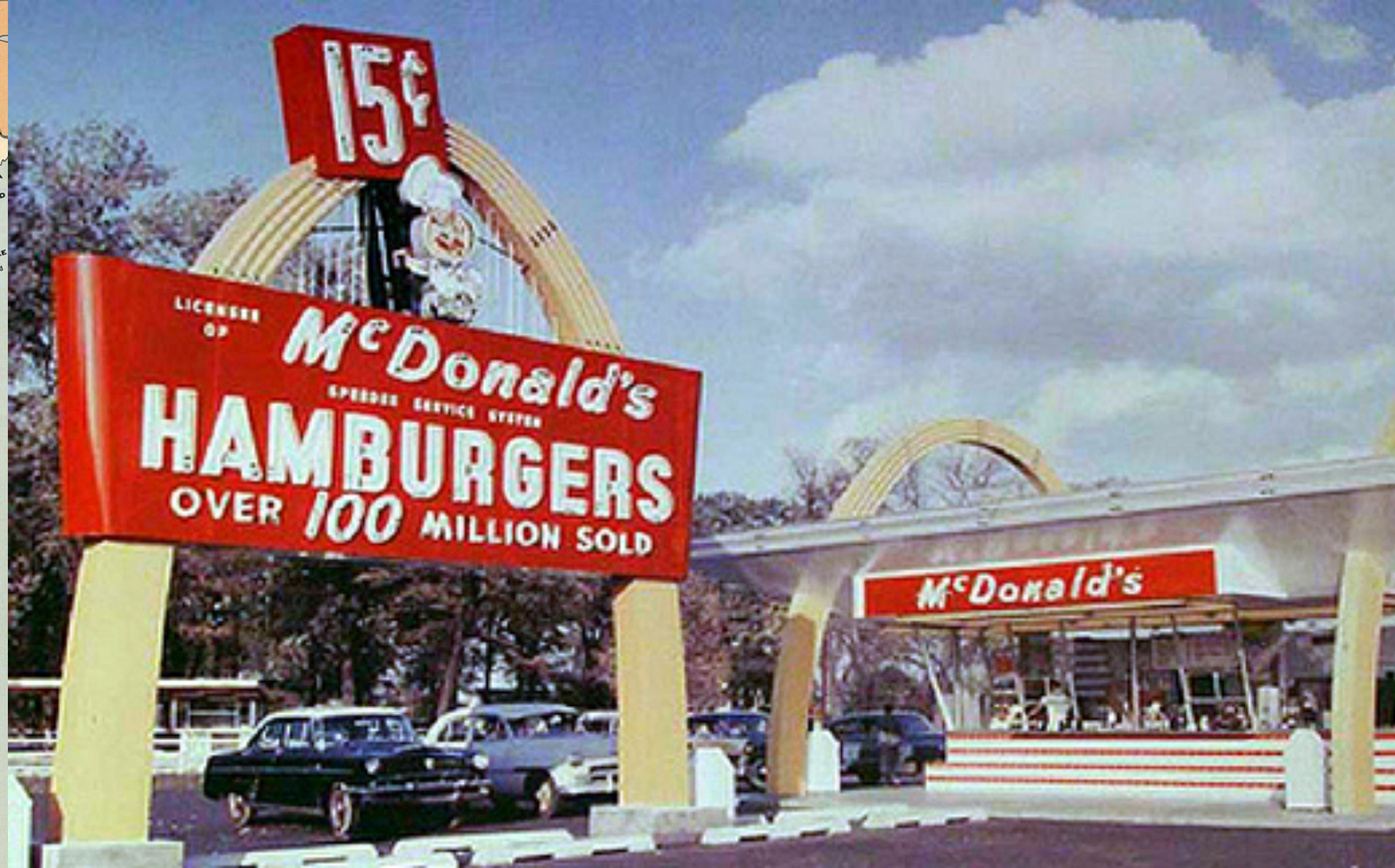
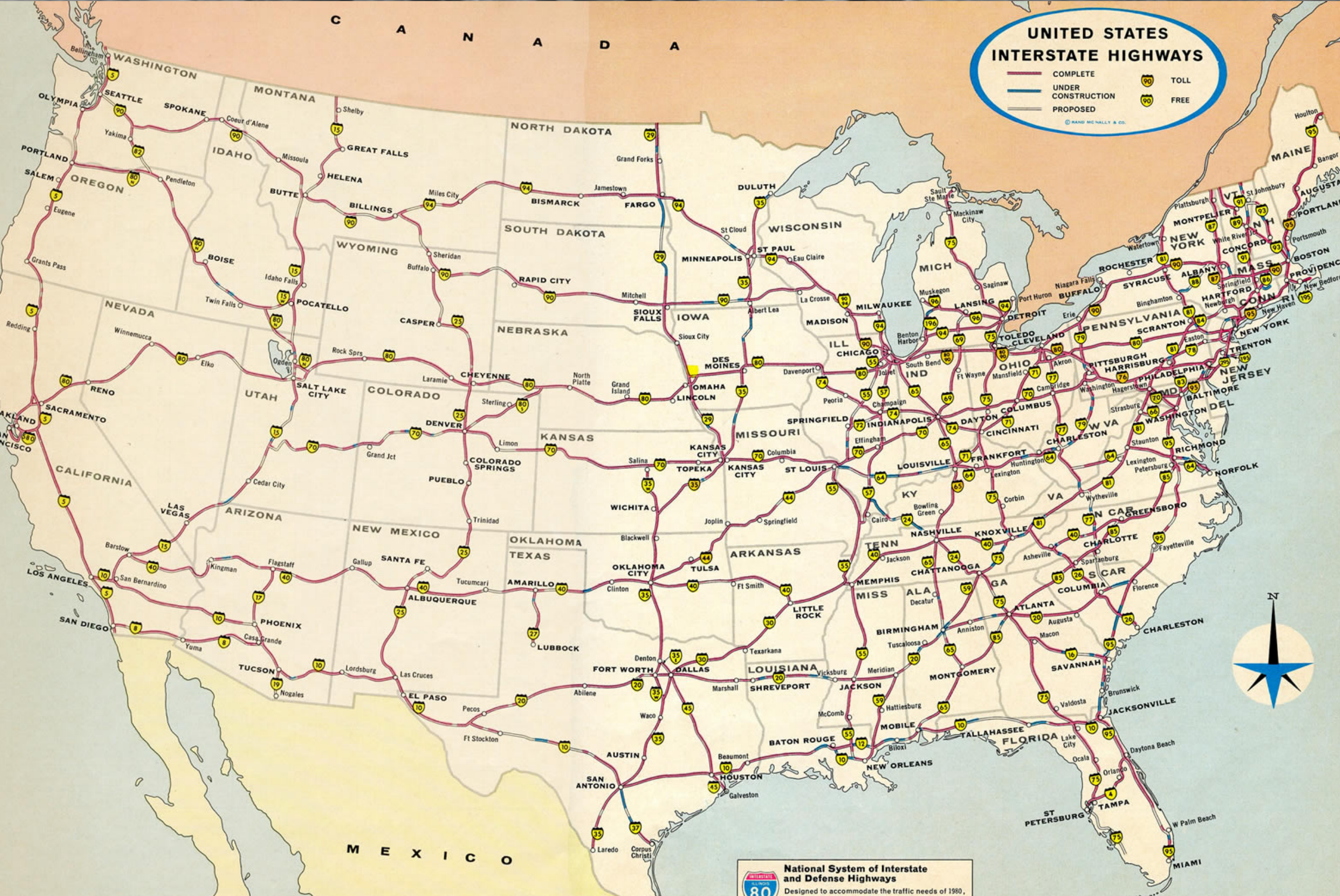




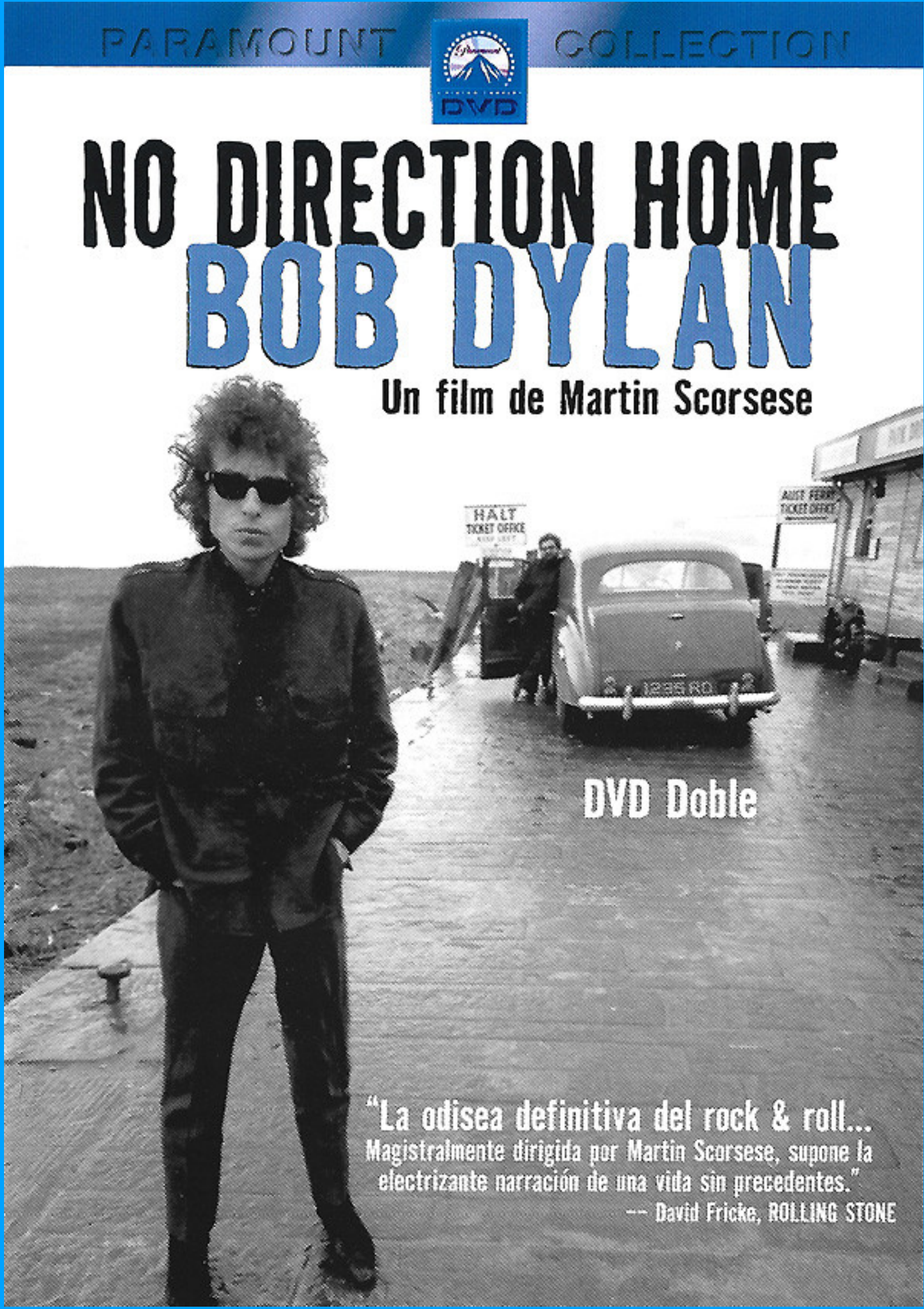
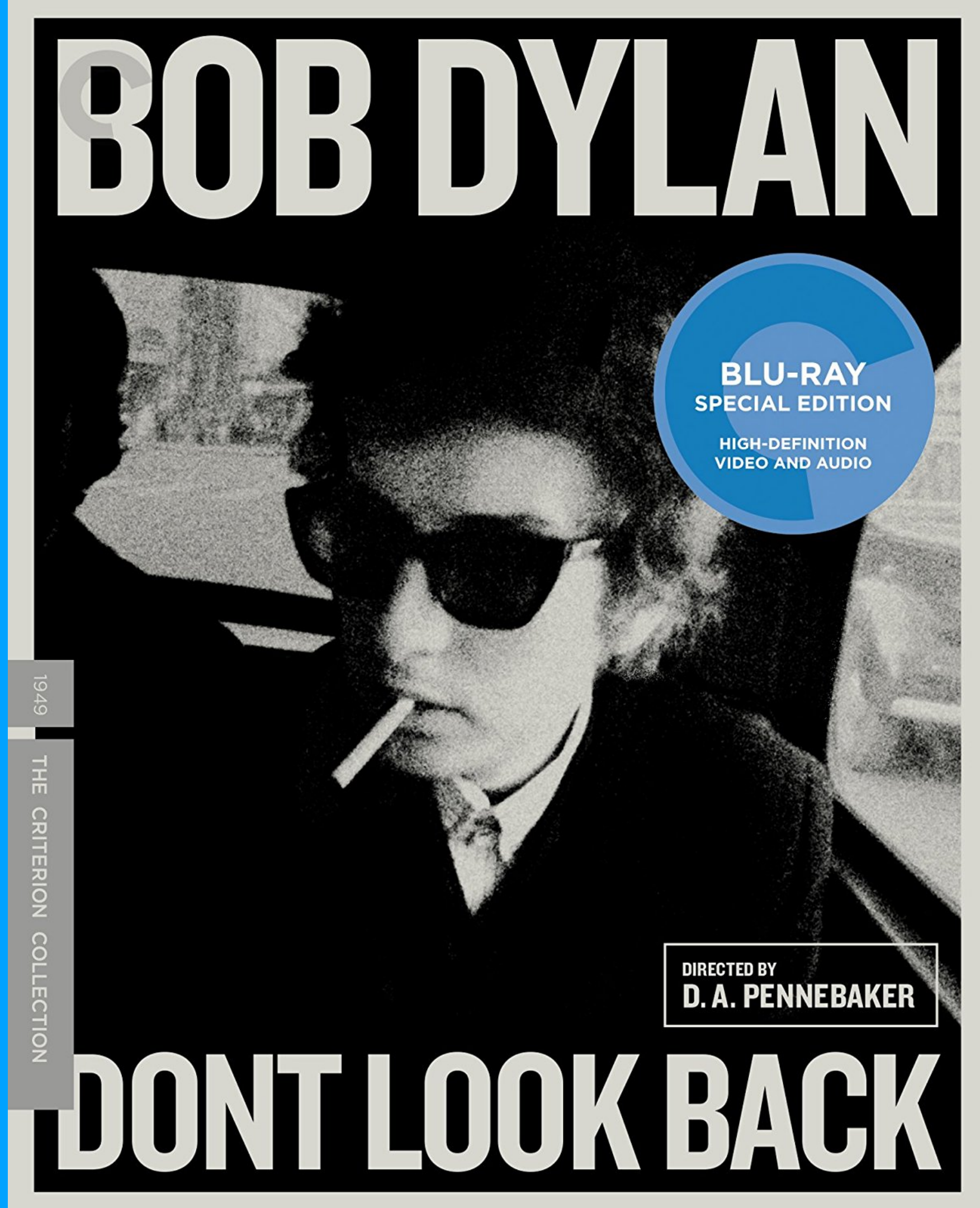
















**No Direction Home**

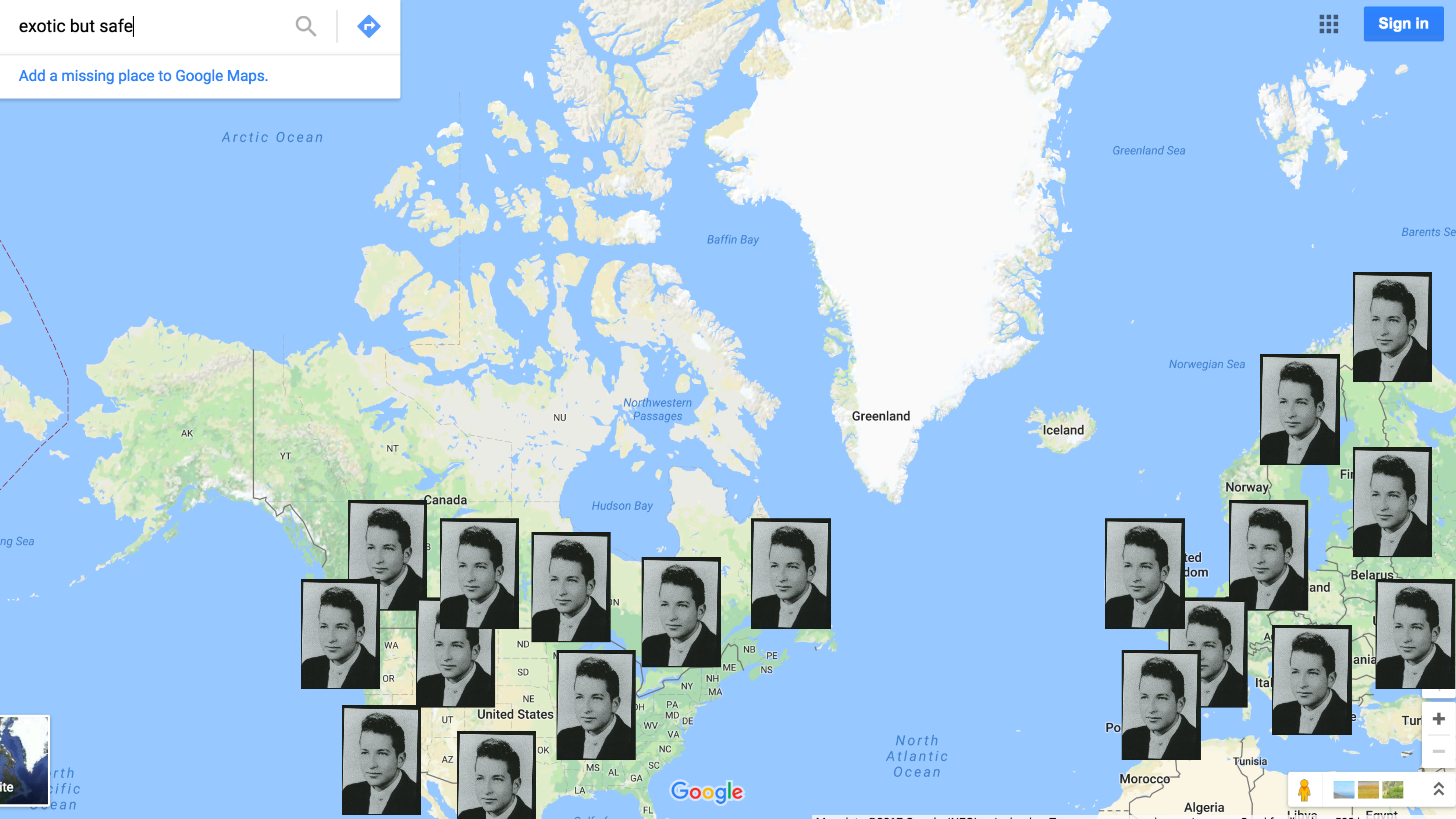


exotic but safe



Sign in

Add a missing place to Google Maps.



Arctic Ocean

Greenland Sea

Baffin Bay

Barents Sea

Norwegian Sea

Northwestern Passages

Greenland

Iceland

AK

YT

NT

NU

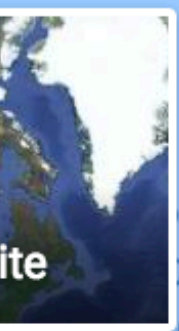
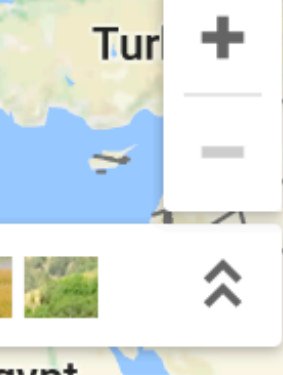
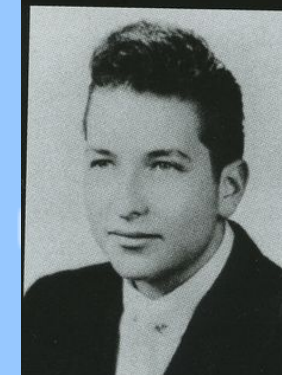
Hudson Bay

Canada

ing Sea

Norway

Fin



Google



Algeria

Libya

Egypt

Morocco

Tunisia

Tur

Pol

Italy

Poland

Belarus

United Kingdom

Finland

Iceland

Norway

Greenland

Canada

United States

Alaska

Yukon

Northwest Territories

Northern Territory

Victoria

Queensland

Western Australia

South Australia

Tasmania

New South Wales

Victoria

Queensland

Western Australia

South Australia

Tasmania

New South Wales

Victoria

Queensland

Western Australia

South Australia

Tasmania

New South Wales

Victoria

Queensland

Western Australia

South Australia

Tasmania

New South Wales

Victoria

Queensland

Western Australia

South Australia

Tasmania

New South Wales

Victoria

Queensland

Western Australia

South Australia

Tasmania

New South Wales

Victoria

Queensland

Western Australia

South Australia

Tasmania

New South Wales

Victoria

Queensland

Western Australia

South Australia

Tasmania

New South Wales

Victoria

Queensland

Western Australia

South Australia

Tasmania

New South Wales

Victoria

Queensland

Western Australia

South Australia

Tasmania

New South Wales

Victoria

Queensland

Western Australia

South Australia

Tasmania

New South Wales

Victoria

Queensland

Western Australia

South Australia

Tasmania

New South Wales

Victoria

Queensland

Western Australia

South Australia

Tasmania

New South Wales

Victoria

Queensland

Western Australia

South Australia

Tasmania

New South Wales

Victoria

Queensland

Western Australia

South Australia

Tasmania

New South Wales

Victoria

Queensland

Western Australia

South Australia

Tasmania

New South Wales

Victoria

Queensland

Western Australia

South Australia

Tasmania

New South Wales

Victoria

Queensland

Western Australia

South Australia

Tasmania

New South Wales

Victoria

Queensland

Western Australia

South Australia

Tasmania

New South Wales

Victoria

Queensland

Western Australia

South Australia

Tasmania

New South Wales

Victoria

Queensland

Western Australia

South Australia

Tasmania

New South Wales

Victoria

Queensland

Western Australia

South Australia

Tasmania

New South Wales

Victoria

Queensland

Western Australia

South Australia

Tasmania

New South Wales

Victoria

Queensland

Western Australia

South Australia

Tasmania

New South Wales

Victoria

Queensland

Western Australia

South Australia

Tasmania

New South Wales

Victoria

Queensland

Western Australia

South Australia

Tasmania

New South Wales

Victoria

Queensland

Western Australia

South Australia

Tasmania

New South Wales

Victoria

Queensland

Western Australia

South Australia

Tasmania

New South Wales

Victoria

Queensland

Western Australia

South Australia

Tasmania

New South Wales

Victoria

Queensland

Western Australia

South Australia

Tasmania

New South Wales

Victoria

Queensland

Western Australia

South Australia

Tasmania

New South Wales

Victoria

Queensland

Western Australia

South Australia

Tasmania

New South Wales

Victoria

Queensland

Western Australia

South Australia

Tasmania

New South Wales

Victoria

Queensland

Western Australia

South Australia

Tasmania

New South Wales

Victoria

Queensland

Western Australia

South Australia

Tasmania

New South Wales

Victoria

Queensland

Western Australia

South Australia

Tasmania

New South Wales

Victoria

Queensland

Western Australia

South Australia

Tasmania

New South Wales

Victoria

Queensland

Western Australia

South Australia

Tasmania

New South Wales

Victoria

Queensland

Western Australia

South Australia

Tasmania

New South Wales

Victoria

Queensland

Western Australia

South Australia

Tasmania

New South Wales

Victoria

Queensland

Western Australia

South Australia

Tasmania

New South Wales

Victoria

Queensland

Western Australia

South Australia

Tasmania

New South Wales

Victoria

Queensland

Western Australia

South Australia

Tasmania

New South Wales

Victoria

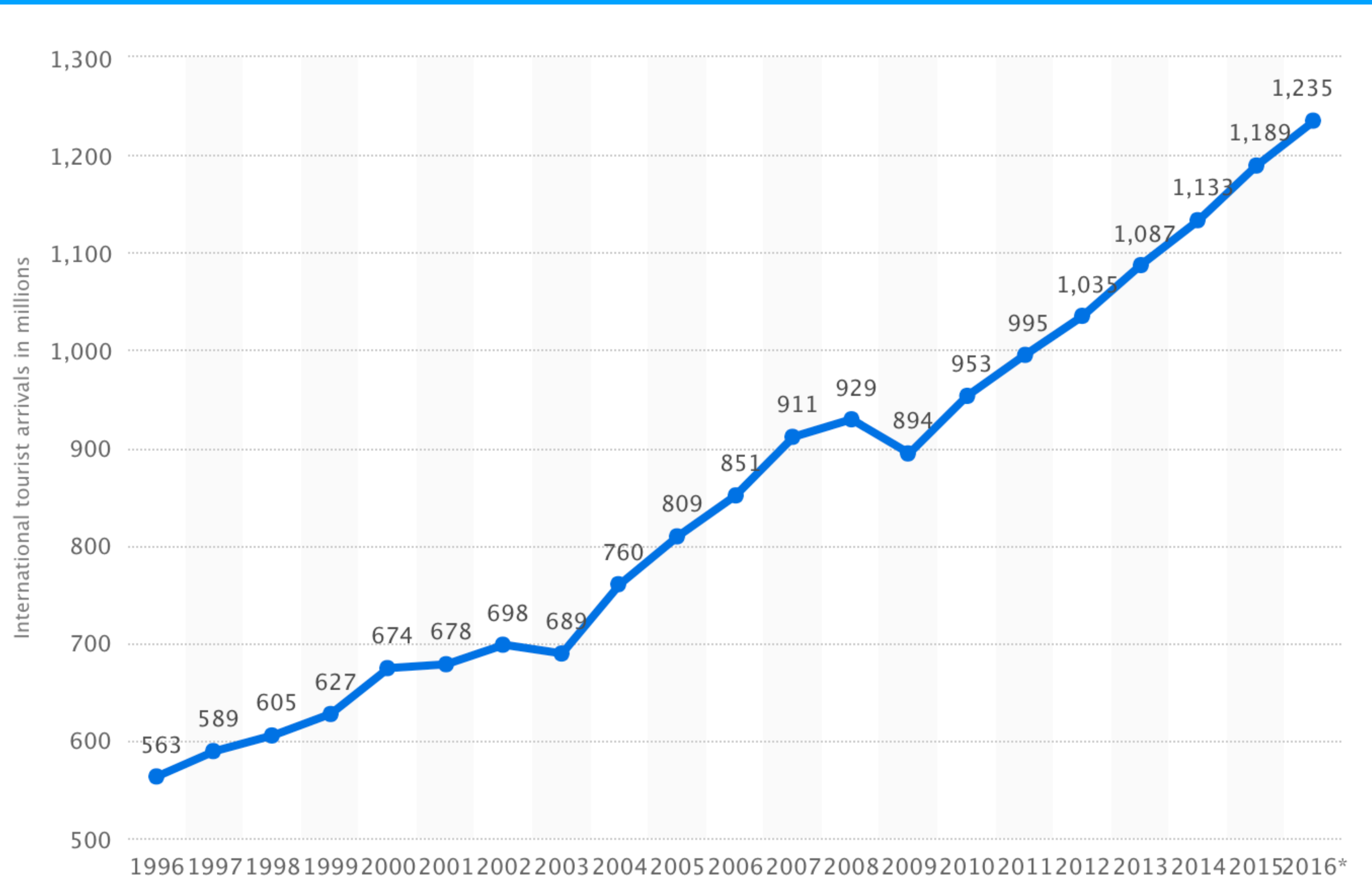
Queensland

Western Australia

South Australia

Tasmania







Því meira sem við ferðumst

Því meira líkist heimili okkar heiminum

Sem eykur þörf okkar til að ferðast



A world map showing a dense network of green lines representing flight routes and red dots representing airports. The map is set against a dark blue background with a white grid. The text "Don't Look Back" is overlaid in a white box in the center.

**Don't Look Back**







A world map showing a dense network of green lines representing flight routes and red dots representing airports. The map is set against a dark blue background with a white grid. The text "Ekki líta um öxl" is overlaid on the map in a white box.

**Ekki líta um öxl**



A scenic landscape of a mountain range in Iceland, characterized by lush green slopes and thick white mist or fog that partially obscures the peaks and valleys. The sky is a pale, hazy blue. The overall atmosphere is serene and ethereal.

# **hugleiðing um Ísland**